



LIBBY HILL FOREST TRAILS

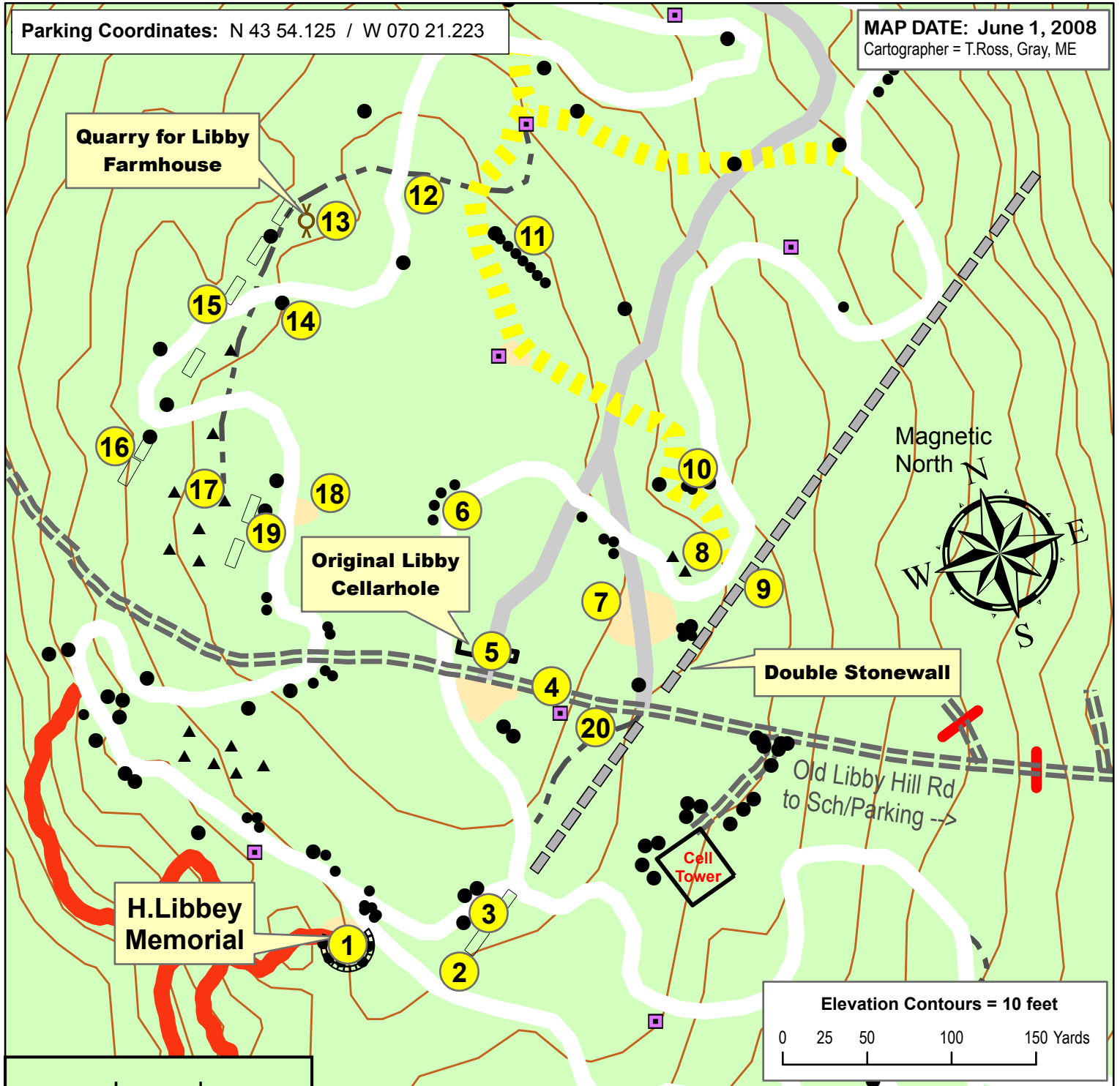
Gray, Maine

LIBBY FARMSTEAD TOUR

Stonewalls, Cellarhole, Quarry, Farmstead Evidence
Originally settled 1790's as sheep farm; uninhabited since 1870's
Land donated to Town of Gray 1971; Libby Hill Trails open 2001

Parking Coordinates: N 43 54.125 / W 070 21.223

MAP DATE: June 1, 2008
Cartographer = T.Ross, Gray, ME



Legend

- Cellarhole Remains
- ⊗ Quarry
- Large Rocks, Boulders
- ▲ Rock Pile
- ===== Stonewall, Major
- - - - Stonewall, Remnant
- Tree ID Sign
- ===== Old Libby Hill Road
- TRAIL - MooseOdyssey
- ===== TRAIL - DeerRun
- - - - TRAIL - Old, UnBlazed
- ATV Route
- TRAIL - H.Libbey
- Contours 10 ft
- Forest Clearing

LIBBY FARMSTEAD TOUR "STOPS"

- | | |
|----------------------------------|----------------------------------|
| 1 Harold Libbey Memorial | 11 Boundary Rocks |
| 2 Barbed Wire Embedded in Trees | 12 4-Generation Stump |
| 3 Wolf Tree (lone tree in field) | 13 Quarry for Libby Farmstead |
| 4 Old Rocks moved Long Ago | 14 Glacial Erratic Bldr w/split |
| 5 Cellarhole and Foundation | 15 Stonewall for Crop Field |
| 6 New Rocks moved Recently | 16 Stonewall w/ "Entrance" |
| 7 Clearing Made 2003 Storm | 17 Garden "Cairns" |
| 8 Compare Old/New Rocks | 18 Clearing Made by 2003 storm |
| 9 Double Stone Wall | 19 Glacial Erratic w/ Rock Tripe |
| 10 Compare Red/White Pines | 20 New or Old Rocks? |