



Holmquist Hollow

McPIKE'S HIKE

LIBBY HILL FOREST GRAND OPENING

FEBRUARY 25, 2001

9:30 AM – Ribbon Cutting Ceremony

Location- Edge of Ball field near pond

9:45 AM – 10 AM – Youth Cross-Country Ski Race around the ball field

10 AM - 11AM Open Competition Cross-Country Ski Race

Location – Start and Finish on Middle School athletic fields. Best view are from the hill above the field. Skiers please register at the table in front of Middle School!

10:15AM

Winter Nature Walk with Carryl Widowson – 45 minute lecture on natural features on the trail near the pond. Meet at information table in front of the middle school. Great for all ages!

10:30AM-11:30AM - Snow Fun Events (sliding and snow sculpture contests)

Location – on the athletic fields

10:30 AM- 12:30PM – Ski equipment demonstration by Sebago Outfitters

Location – on the athletic fields.

10:35AM - Sled Dog Demonstration

Location – on the athletic fields

10:45 AM – Forestry Management Tour with Two Trees Timber Management

Local forest managers will take a group on a walk up Libby Hill demonstrating the 3 forestry methods used in this area. Meet at table in front of Middle School.

11:30 AM - 12:15 PM Snow Shoe races

Location – Athletic Fields of Middle School

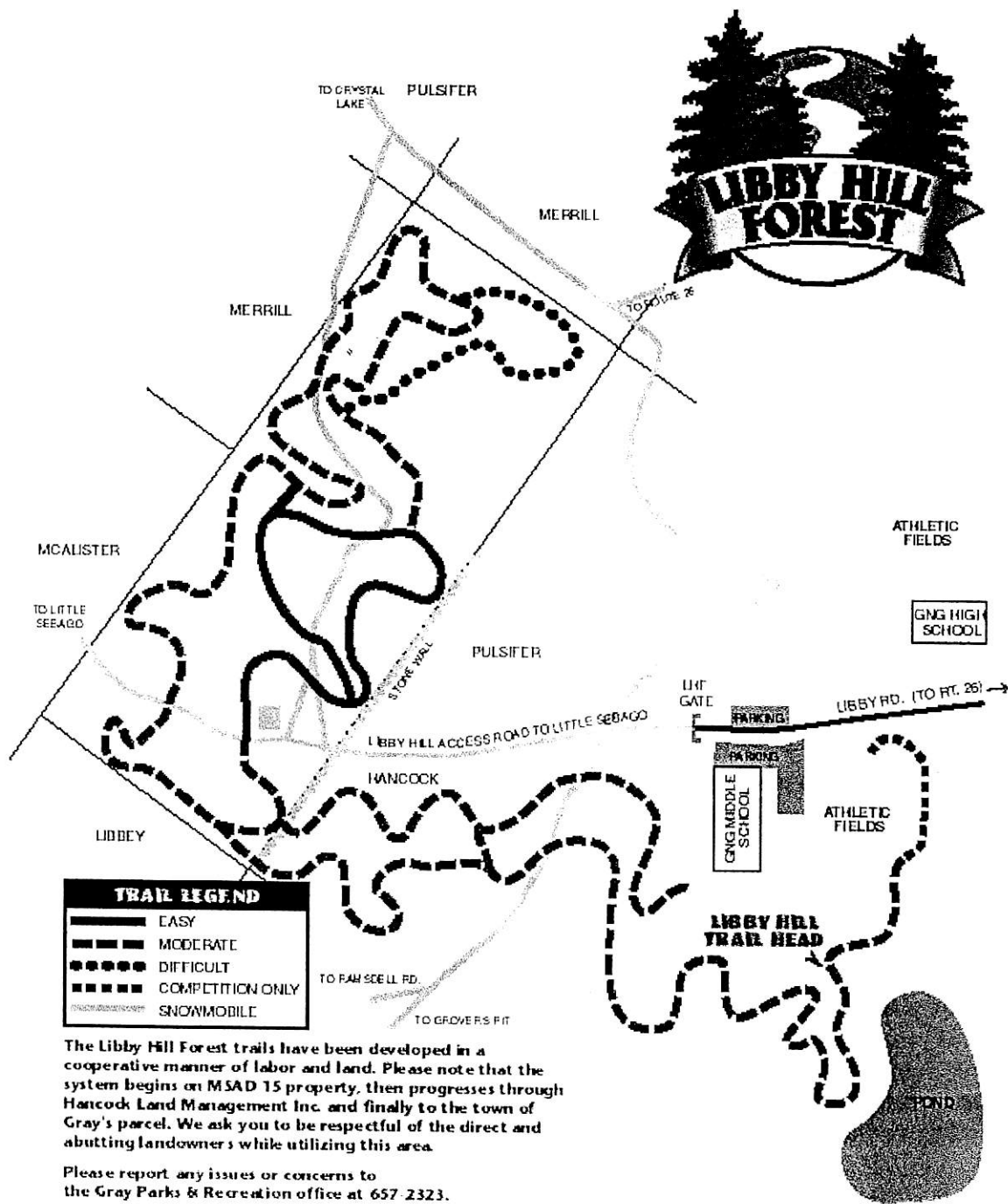
Ongoing Trail Tours: - Trail Volunteers will be available to take groups out on the trails and explain how the trail system works. Please ask for a tour guide at the information table!

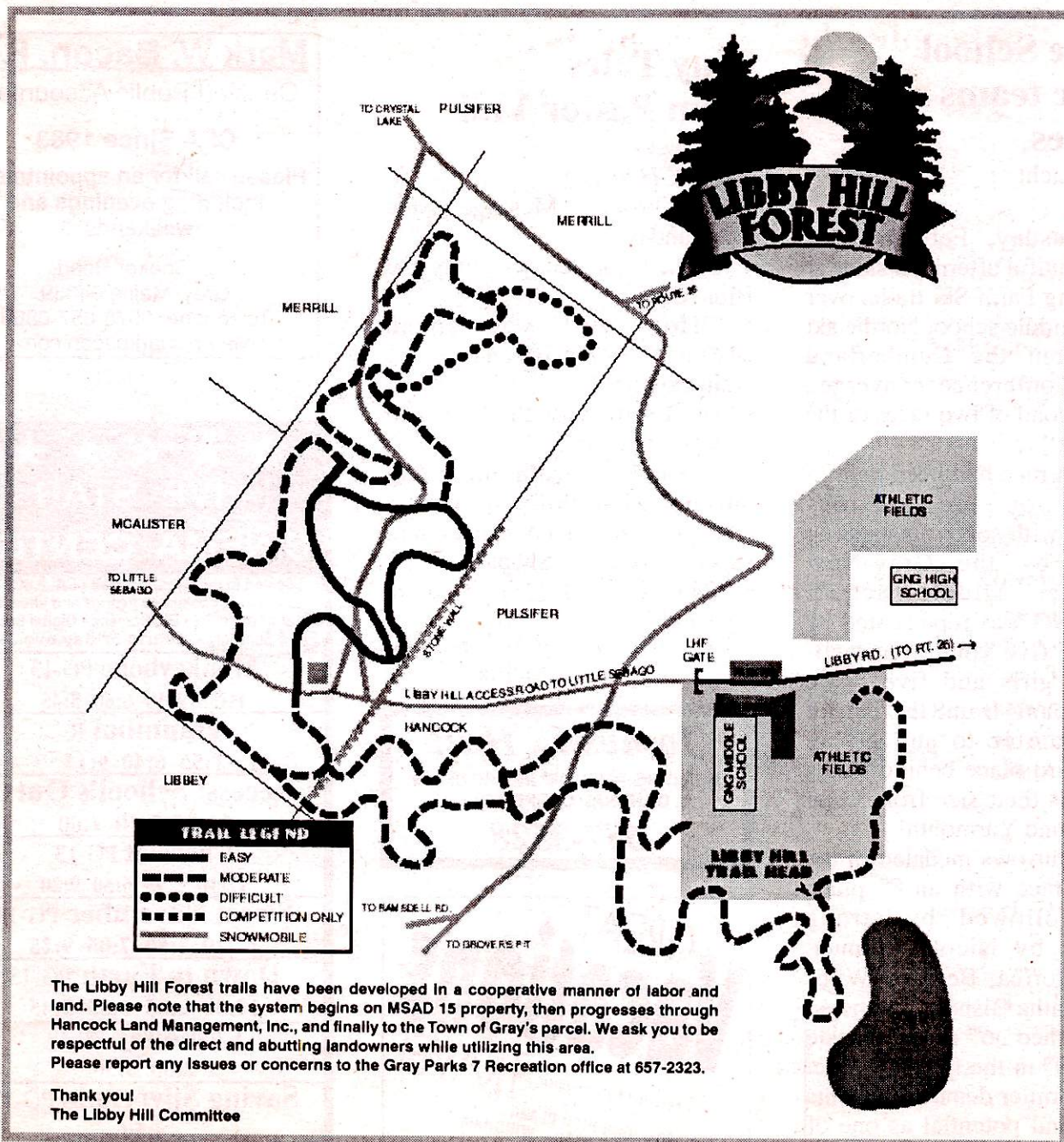
Questions? – See Volunteers on Athletic Fields or near Information Table

Want to become a friend of Libby Hill?

- Visit our Website at www.libbyhill.org
- Come to a committee meeting (April 4th)
- Learn how you can help!

Call Steve McPike for more information at 657-2114.





Libby Hill Forest Trails Grand Opening Sunday February 25th

9:30 A.M.: Ribbon Cutting Ceremony to be held on the trail entrance near the pond by the middle school ball field

9:45 A.M.-10 A.M.: Youth Cross-Country Ski Race around the ball field

10 A.M.-11 A.M.: Open Competition Cross-Country Ski Race

10:15 A.M.: Winter Nature Walk with Caryl Widdowson, demonstrating that the woods are very much alive in winter

10:30 A.M.-11:30 A.M.: Snow Fun Events
Sliding: Longest Slide, Fastest Slide, Target Sliding. Snow Sculptures

10:45 A.M.: Forestry Management Tour with Two Trees Timber Management up Libby Hill to show the various forest management strategies that can be used and contrast their approaches.

11:00 A.M.: Dogsled demonstrations with Lila Littlefield

11:30 AM - 12:15 PM: Snowshoe races

ALLDAY:

Hot chocolate

Ongoing Trail Tours: Trail Volunteers will be available to take groups out on the trails and explain how the trail system works. New trail maps will be available to hand out

Libby Hill Forest: How it came to be

By Steve McPike

In 1970, the Town of Gray received a donation of 70 acres of land to be used for park and recreation activities. This property is located on top of the ridge behind the Gray Middle and High Schools. This land has had a number of old logging roads that were used for a variety of activities by a wide range of citizens in Gray.

In August of 1999, the Gray Parks and Recreation Department decided to start an ad hoc committee to make a more formal trail system on the property. The initial committee started out with a half dozen Gray residents who were interested in finally developing the recreational area. By January of 2000, the committee had grown to over two dozen interested members, and an outline for how the property should be developed was presented to the Town Council.

The Council approved the project and encouraged the committee to "think big" and try and make a first-class recreation area. In February of 2000, the committee obtained a grant from the Maine Forest Service, which has funded nearly 100% of the project.

In June of 2000, a trail designer was hired to make the trail system blend optimally with the contours of the property. Every Thursday evening during the summer, volunteers showed to help clear the initial brush from the newly marked trails. A formal forest management plan was created and implemented in the fall of 2000. Volunteers continued to work their way up the hill that sometimes seemed much higher than its 469 feet of elevation! Excavation began in November for 6 weeks, removing stumps and leveling out depressions in the trails. Between December 2000 and February 2001, the signage and mapping of the trails were finished with the efforts of nearly 100 volunteers and over 2,000 hours of volunteer time.

We are now happy to present the Libby Hill Forest Trails to the citizens of Gray!

The trail system consists of nearly 5 miles of non-motorized trails and 2 miles of the original logging roads that can still be used by motorized vehicles. Trails are marked with which type of usage is allowed (see map), and we ask that trail users respect each other and obey the trail designations. The trails also traverse the school property and Hancock lumber property. We also ask that all trail users respect the

private landowners' properties and stay on the marked trails.

The trails offer a great place to walk, ski, bike, run, walk your dog, or just enjoy nature! They are available for year-round usage and parking is available at the gate near the end of the Libby Hill Road. The main entrance for the trail is not at the orange gate, but rather starts at far end of Middle School Ball Field, near the small pond there. Trail maps are available from the Parks and Rec department; however, there are clear trail-marking signs at all the trail entrances as they enter the woods. A number of loops from 1 - 3 miles can be done, depending on your desire from the ball field.

We invite everyone to come and explore Libby Hill Forest and discover one of Gray's finest assets!

Would You Like to Help?

This year the Libby Hill Project Committee will evolve into a new organization known as "The Friends of Libby Hill". This group will continue to steward the property, which will include trail maintenance, trail promotions, and recommending trail policies to the Recreation Department. We are currently looking to have interested citizens get involved with the trails and donate whatever time they might be able to commit. You will be part of a very rewarding project and meet a very committed group of volunteers. If you would like to learn more, please contact Steve McPike at 657-2114 (or email at smcpike@maine.rr.com). Or visit our website: www.libbyhill.org.

Thank you all!



Two for the trails

By Ray Clark

As the Libby Hill Committee has already noted, dozens of people have helped make the Libby Hill Forest a reality. But it took the unflagging commitment of two of them in particular to keep the project alive.

Carl Holmquist put more than 1,200 hours into the project. He put in a full day of tree-cutting while suffering from pneumonia. And he's been known to leave Boston at 4:30 P.M. and be on the trails two hours later, having changed from business suit to working clothes in the woods (like Superman). Carl and his family-wife Shelly and son Tyler-have devoted many hours to Libby Hill Recreation Area.

Steve McPike has been Holmquist's ally, not simply out on the trails but on the computer as well, keeping the Town and Libby Hill Committee members in constant communication.

Besides their work on the trails, McPike and Holmquist have been tireless advocates for the project, attending meetings, preparing reports, soliciting support and attending to the smallest detail.

Libby Hill Forest will for years be a special asset to the Town of Gray. If there were true justice, it would be called McPike-Holmquist Hill-or, perhaps, Holmquist-McPike's McPeak.

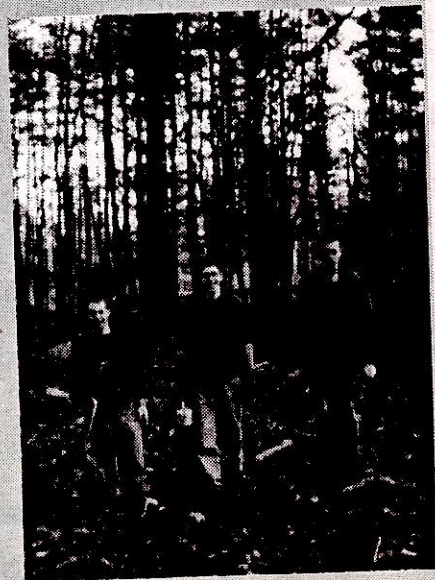
February 23, 2001 • THE GRAY NEWS • 7

The people who made it happen:

Caroline Allam
Joe Baiocchi
Tom Baiocchi
Mike Baiocchi
Amanda and Ryan Barton
Craig and Brenda Barton
Dean Bennett
Jean Bibber
Tom Bibber
Gray Boy Scout Troop
Dick Cahill
Ray Clark
Mike Cobb
Mike Cormier
Jeff Davis
David Dyer
Lona Farrell
Lowell Fancher
Patrick Flynn
Merritt Foster
Jim Foster
Anne Gass
Kyle Gobeil
Craig Gobeil
Ted Googins
Tom Gorrill
Andy Gorrill
Jerry Grant
Bill Hancock
G-NG High & Middle School Students
G-NG High School Track Team
Anita Holmquist

Bill Holmquist
Carl Holmquist
Shelly Holmquist
Tyler Holmquist
Wayne Holmquist
Ron Howard
Tim and Kate Joy
Randall Keller
John Keller
Kerrie Keller
Laurie Keller
Steve Lavallee
Emma Leavitt
Silas Leavit
L.W. Leeman
Rick Licht
Will Matthews
Doreen McPike
Steve McPike
Ed Molleo
Mike Moody
Ann Morgan
Nancy Moriba
John Morton
William Murphy
Carl Nitz
Ron Norton
Irene Picard
Marilyn Porcaro
Jean and Phil Pulsifer
Mike Rousseau
Elizabeth Salvetti

Mark Sanborn
Michelle Sanborn
Erik Street
Glenn Sylvester
Pat Sylvester
Adam Vachon
Jason Wilson
Caryl Widdowson
Pam Wilkinson
Wayne Wood
Michael Wood
J.P. Yorkey
Jon Young



Special Thanks:

William and Sylvia Dow Benefactors

In 1970 this couple was visionary in deciding to give the Town of Gray 70 acres of prime woodland for park and recreational use. Sprawl, traffic congestion, and lack of open space was never a consideration then, but they saw a future need to make sure the residents of Gray could always enjoy its rich natural heritage. It took over 30 years to honor their wishes and we hope they would approve of what has become of their property. The best tribute we can give the Dows is to start thinking about what legacy we can all provide 30 years from now to the future residents of Gray!

Cormier Landscaping Mike Cormier Gray, ME 04039

Mike donated his chipper and labor on a cold Sunday in December. Mike only takes one day a week off and we were very grateful that he took his precious time to help us chip brush. He didn't even flinch when one of our stubborn logs jammed his industrial chipper!

The Gray News

Ray Clark and his staff provided frequent press space for our volunteer efforts, and Ray even worked pulling brush on some of our toughest hills!

Gray Public Works Steve Lavallee Gray, ME 04039

Steve and his staff repaired the erosion damage on Libby Hill Road, sank the gate from McCann Fabrication into its position and produced the gravel parking lot at the foot of Libby Hill. The cooperation and timely assistance given during their busy season was and is well appreciated.

Hancock Land Management Company Matt Hancock Casco, ME 04015

Hancock Land Management owns the tract of land between the Middle School and the actual Libby Hill property. Mat Hancock, Jeff Hall and John Gunn of Hancock Land Management have been very cooperative and generous in allowing the trails to connect the school property to the Libby Hill property. We appreciate the contribution that this locally-focused company has given to our town!

Maine Forest Service Tish Carr

Augusta, ME 04330

If it was not for the grant that the Maine Forest Service had provided for our project we definitely would not have been able to come so far so quickly. We believe that this was money well spent and will develop a much greater appreciation for conservation and the outdoors in our community for generations to come.

Maschino Brothers Lumber George Maschino New Gloucester, ME 04260

Mr. Maschino came through in a hurry when we desperately needed pressure-treated posts when he donated 20 posts to our cause.

Maxwell Excavation John Merrill Gray, ME 04039

John Merrill and his crew worked closely with Carl Holmquist clearing the many rocks, stumps and debris in constructing the actual trail system. John and his crew adapted quickly to the unique needs and differences of constructing skiing and running trails vs. roads and

foundation holes. We all gained a new appreciation for how much work heavy equipment can complete in a day's work. The pride and enthusiasm John and his crew developed while working on the project really shows and is greatly appreciated.

McCann Fabrication

Rick McCann

New Gloucester, ME 04260

Rick and the staff of McCann Fabrication are to be commended for the donation of the Libby Hill Forest (LHF) gate that helps protect our special area. The quality workmanship of the gate and community support is very appreciated.

The Monument Newspaper

Elizabeth Salvetti helped by posting frequent volunteer notices in her paper all summer and fall. She even braved snowshoes to explore the trails firsthand in January.

John Morton Outdoors

Thetford, Vt 05075

John is an internationally known trail designer, as well as a former Olympic Athlete and Coach. We were fortunate to have such a qualified gentleman assist us with our project.

He was highly enthusiastic about the many natural benefits the land provided, as well as its connection with the schools. He put in a special effort in making our trails one of the best systems in New England. He spent many extra hours studying the land and maximizing its contours and natural features. You will appreciate his style the first time you use the trails!

Nitz Landscaping

Carl Nitz

Gray, ME 04039

Carl braved hardening frost to help us erect a dozen sign posts in time for winter. Carl brought his equipment and enthusiastically assisted us in getting the work done just before the snow began to fly!

Scott Roberts

Norway, ME 04268

Scott was contracted by Hancock Land Management to perform the timber harvest. He worked 6 to 7 days a week helping us to complete the harvest and trail system before the real snow came. Scott plugged right in to the unique harvest requirements laid out for him by Two Trees. His cooperative work ethic and commitment to quality made him a pleasure to have on the job.

Two Trees Timber Management

Winthrop, Maine 04364

Harold Burnett, LPE, and Paul Larrivee

Harold and Paul (a previous resident of Gray) worked jointly to formulate a Forest Management Plan that balanced the needs and requests of our committee with an appropriate silviculture plan that will contribute to the ongoing use and health of the forest. They also developed and managed a unique timber harvest that kept the esthetic features of the forest while incorporating both new and old trails.

Wayne Wood Surveying

Wayne Wood

Gray, ME 04939

Wayne assisted the Town and our committee by working the survey of the Libby Hill lot into his busy schedule last spring so we could start our trail blazing in June.

